

# NIGHT LETTER

## THE WESTERN UNION TELEGRAPH COMPANY

25,000 OFFICES IN AMERICA

INCORPORATED

CABLE SERVICE TO ALL THE WORLD

This Company TRANSMITS and DELIVERS messages only on conditions limiting its liability, which have been assented to by the sender of the following Night Letter. Errors can be guarded against only by repeating a message back to the sending station for comparison, and the Company will not hold itself liable for errors or delays in transmission or delivery of Unrepeated Night Letters, sent at reduced rates, beyond a sum equal to ten times the amount paid for transmission; nor in any case beyond the sum of Fifty Dollars, at which, unless otherwise stated below, this message has been valued by the sender thereof, nor in any case where the claim is not presented in writing within sixty days after the message is filed with the Company for transmission.

This is an UNREPEATED NIGHT LETTER, and is delivered by request of the sender, under the conditions named above.

ROBERT C. CLOWRY, PRESIDENT

BELVIDERE BROOKS, GENERAL MANAGER

### RECEIVED AT

#3Ny.Do. 39 8.25A

Chicago, Ills., December 7, 1910.

Professor E. G. Conklin,

Princeton, N. J.

Dr. Whitman is dead of pneumonia burial will be at Woodshole Saturday December tenth about ten AM. Train leaves Boston for Woodshole at seven thirty eight AM. Please notify all others in your neighborhood who might wish to go.

Albert P. Matthews.

Domestic and Foreign Money Orders by Telegraph and Cable

# THE WESTERN UNION TELEGRAPH COMPANY

INCORPORATED

THE LARGEST TELEGRAPHIC SYSTEM IN THE WORLD.

OVER ONE MILLION MILES OF WIRE IN THE UNITED STATES AND CANADA.

It has over 25,000 Telegraph Offices, including Branch Offices.

It has also Direct Connection by Telegraph or Telephone with many more remote and smaller stations, making a total list of 60,000 in the United States, Canada and Mexico, and this number is rapidly increasing.

## SEVEN ATLANTIC CABLES

Connecting North America with all points in Europe and beyond, including Two Cables of the American Telegraph and Cable Company, Four Cables of the Anglo-American Telegraph Company, and One Cable of the Direct United States Cable Co.

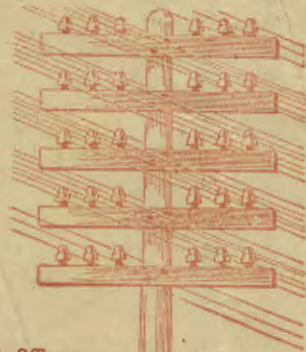
Direct Wires to Galveston, Texas, connecting at that place with the Cables of the Mexican, the Central and South American Telegraph Companies for all points in Mexico and Central and South America.

Direct Wires and Cables to Havana, Cuba, connecting at that place with the Cuba Submarine and West India and Panama Telegraph Companies for all points in the West Indies.

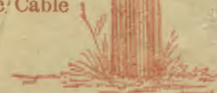
Connects at San Francisco with Pacific Cables to the Sandwich Islands, Honolulu, Guam, the Philippines, China, Japan, etc., and at Victoria, B. C., with Pacific Cable to Australia and New Zealand.

Connects at Seattle, Wash., with U. S. Government Lines and Cables to and in Alaska.

Exclusive connection with the Great North-Western Telegraph Co. of Canada.



THE TWO TELEGRAPH POLES REPRESENT THE RELATIVE SIZE IN NUMBER OF OFFICES OF THE WESTERN UNION AS COMPARED WITH ALL OTHER COMPETING COMPANIES COMBINED



WESTERN UNION TELEGRAPH COMPANY

ALL COMPETING COMPANIES

Domestic and Foreign Money Orders by Telegraph and Cable

SEE OTHER SIDE FOR TELEGRAM

SEE OTHER SIDE FOR TELEGRAM